



MORNING MANTRA



Daily Derivatives & Market Report

NOV 21, 2024



Indian equity markets went through hefty losses on Thursday amid escalating tensions in the Russia-Ukraine conflict and heightened the nuclear concerns. Also, some cautiousness came after a sharp sell-off in Adani group stocks as US prosecutors indicted billionaire Gautam Adani and seven other senior business executives in connection with an alleged \$250 million bribery scheme. As for broader indices, the BSE Mid cap index and Small cap index ended in red.

After making cautious start, markets extended their losses amid mixed global cues, as traders remained cautious and are reluctant to make significant moves keeping close eye on the escalating tensions between Ukraine and Russia. Foreign fund outflows also added some pressure on markets. Foreign institutional investors (FIIs) extended their selling as they sold equities of Rs 3,411 crore worth on November 19. Investors were worried as domestic rating agency Icra said India's real GDP growth for the September quarter is likely to decline to 6.5 per cent due to heavy rains and weaker corporate performance. In afternoon session, indices continued their weak trade, some concern came as Economic Affairs Secretary Ajay Seth's statement that India's economic growth may have slowed in the September quarter, but overall, there is not much downside risk to 6.5-7 per cent growth in the current fiscal year. Traders overlooked the report that the retirement fund body, Employees' Provident Fund Organisation (EPFO) in its latest 'Provisional payroll data' report has showed that 18.81 lakh net members have been added in the month of September 2024, a 9.33% year-on-year growth as compared to September 2023, signifying increased employment opportunities and heightened awareness of employee benefits, bolstered by EPFO's effective outreach initiatives. Markets remained lower in late afternoon session, as traders sold out their riskier stocks.

On the global front, European markets were trading lower amidst renewed tensions between Russia and Ukraine. Asian markets ended mostly in red as the People's Bank of China left its benchmark lending rates unchanged on Wednesday as it monitors the impact of recent policy adjustments. The PBoC maintained its one-year loan prime rate at 3.10 percent. Likewise, the five-year LPR, the benchmark for mortgage rates, was retained at 3.60 percent. The bank had cut its both LPRs by 25 basis points each in October. Back home, Reserve Bank of India's (RBI) article on 'State of the Economy' published in the November Bulletin has said that private consumption is back driven by festive spending, and the medium-term economic outlook remains bullish as the innate strength of the macro-fundamentals reasserts itself.

MARKET SELFIE



MARKET SUMMARY

Domestic Indices	Close	Points	% Change
SENSEX	77155.79	-422.60	-0.54
NIFTY	23349.90	-168.60	-0.72
MIDCAP	44467.99	-162.97	-0.37
SMLCAP	52141.15	-349.79	-0.67
BSEFMC	20335.71	-280.59	-1.36
HEALTHCARE	42447.07	46.96	0.11
AUTO	52303.81	-478.58	-0.91
POWER	7215.62	-98.16	-1.34
REALTY	7630.89	80.92	1.07
BSE IT	41542.32	149.85	0.36
BANKEX	57382.57	-244.47	-0.42
OIL GAS	25249.46	-370.78	-1.45
METAL	29726.32	-61.75	-0.21
INDIA VIX	15.99	0.33	2.11

ADVANCE - DECLINE

Index	Advance	Decline	Unchanged
NSE	962	1878	22
BSE	1238	2730	97

MARKET TURNOVER (₹ in Crs)

Segment	Current	Previous	Net %
BSE CASH	6061	5951	2
NSE CASH	110760	92268	20
NSE F&O	44394362	38219384	16

KEY INDICES RATIOS

INDEX	P/E	P/B	Dividend Yield
NIFTY	21.49	3.50	1.31
SENSEX	22.04	3.91	1.19

KEY NUMBERS TRACKER



FII – DII ACTIVITY IN CASH SEGMENT (₹ in Crs)

FII-DII*	Buy	Sell	Net
DII	14556	10356	4200
FII	16560	21880	(5321)

Note: FPI & DII Figures are provisional

FII ACTIVITY IN DERIVATIVES SEGMENT (₹ in Crs)

FII	Buy	Sell	Net
Index Futures	4802.73	5401.33	(599)
Index Options	3266009.56	3361311.58	(95302)
Stock Futures	27868.44	31477.85	(3609)
Stock Options	79886.52	82413.72	(2527)

PUT-CALL RATIO

Index	Current	Previous
NIFTY	0.87	0.83
BANK NIFTY	0.91	0.92

DOLLAR INDEX

Dollar Index	Current	Previous	% Change
DXY	106.69	106.63	0.06

10-YEARS G-SEC YIELD

Country	Current	Previous	% Change
INDIA	6.836	6.811	0.37
USA	4.406	4.406	0.00

KEY COMMODITIES TRACKER (in \$)

Commodity	Current	Change Points	% Change
Gold	2668.78	16.67	0.63
Silver	31.09	0.17	0.57
Crude-Oil	69.75	1.00	1.45
Brent-Crude	73.78	0.97	1.33

CURRENCY FUTURES & INDEX TRENDS TRACKER



CURRENCY FUTURES

Expiry	Close	Change Points	% Change
27 NOV-24 USD-INR	84.52	0.07	0.08
27 NOV-24 EUR-INR	89.15	-0.21	-0.24
27 NOV-24 GBP-INR	106.86	0.13	0.12
27 NOV-24 JPY- INR	54.75	-0.30	-0.54

INDICES – SUPPORT-RESISTANCE-PIVOT LEVELS

Index	Close	S2	S1	Pivot	R1	R2
NIFTY	23350	23129	23240	23373	23484	23618
SENSEX	77156	76315	76735	77223	77644	78132
NIFTY FUTURES	23349	23147	23248	23378	23478	23608
BANK NIFTY	50373	49406	49889	50271	50754	51136
CNX IT	41953	41338	41645	41986	42293	42633
CNX MIDCAP	54385	53609	53997	54318	54706	55026
CNX SMALLCAP	17597	17304	17450	17579	17725	17854
INDIA VIX	15.99	13.93	14.96	15.87	16.90	17.81

INDEX TREND ANALYSIS

Index	Daily	Weekly	Monthly
NIFTY	SELL	NEUTRAL	NEUTRAL
SENSEX	SELL	NEUTRAL	NEUTRAL
NIFTY FUTURES	SELL	NEUTRAL	NEUTRAL
BANK NIFTY	SELL	NEUTRAL	Buy
CNX IT	Buy	Buy	Buy
CNX MIDCAP	SELL	NEUTRAL	NEUTRAL
CNX SMALLCAP	SELL	NEUTRAL	Buy
INDIA VIX	Buy	Buy	NEUTRAL

SECURITIES BAN IN F&O TRADES FOR 22-11-2024

AARTIIND, ABFRL, ADANIEN GNFC, GRANULES, HINDCOPPER, IGL, NATIONALUM

TECHNICAL VIEWS



NIFTY

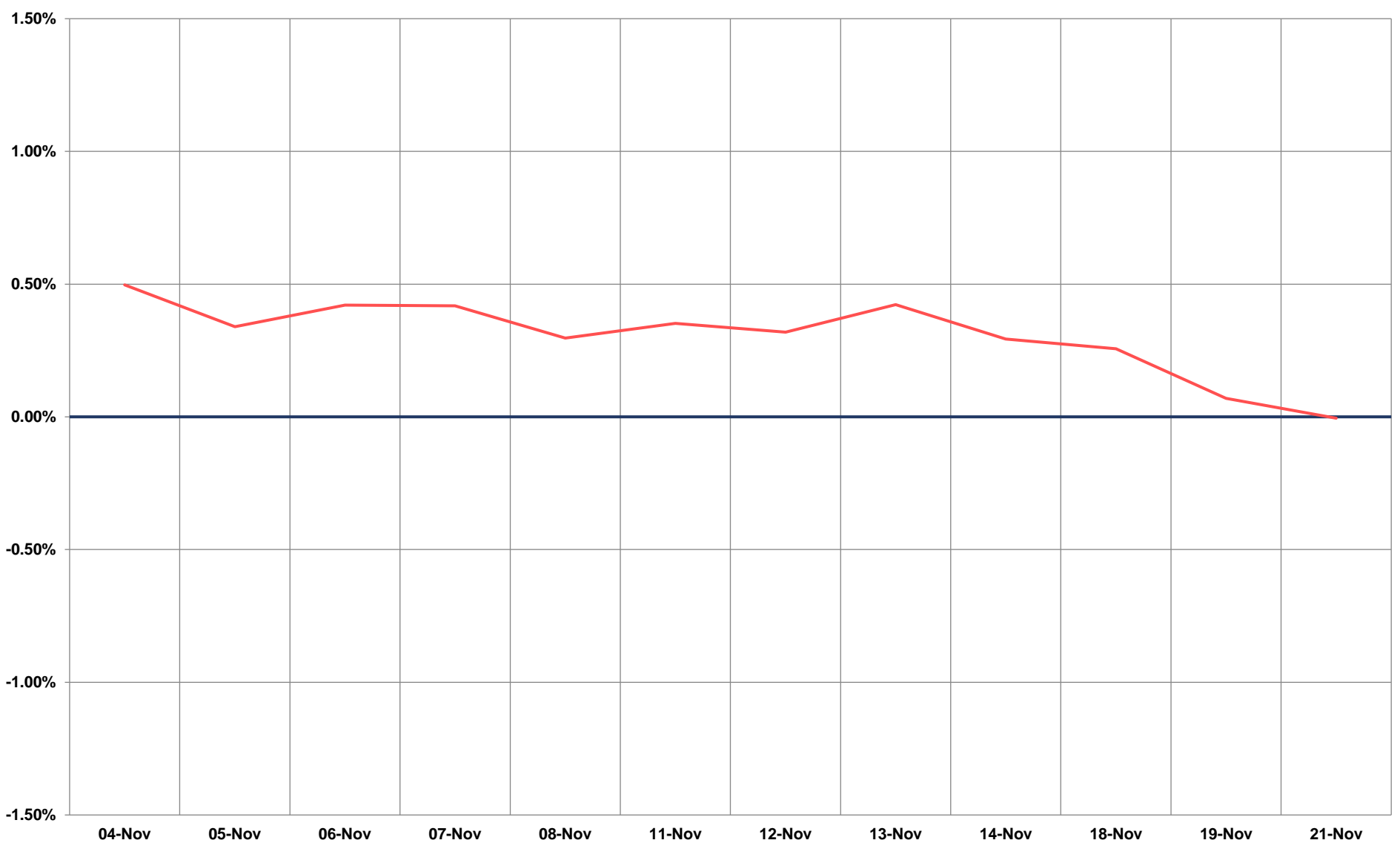
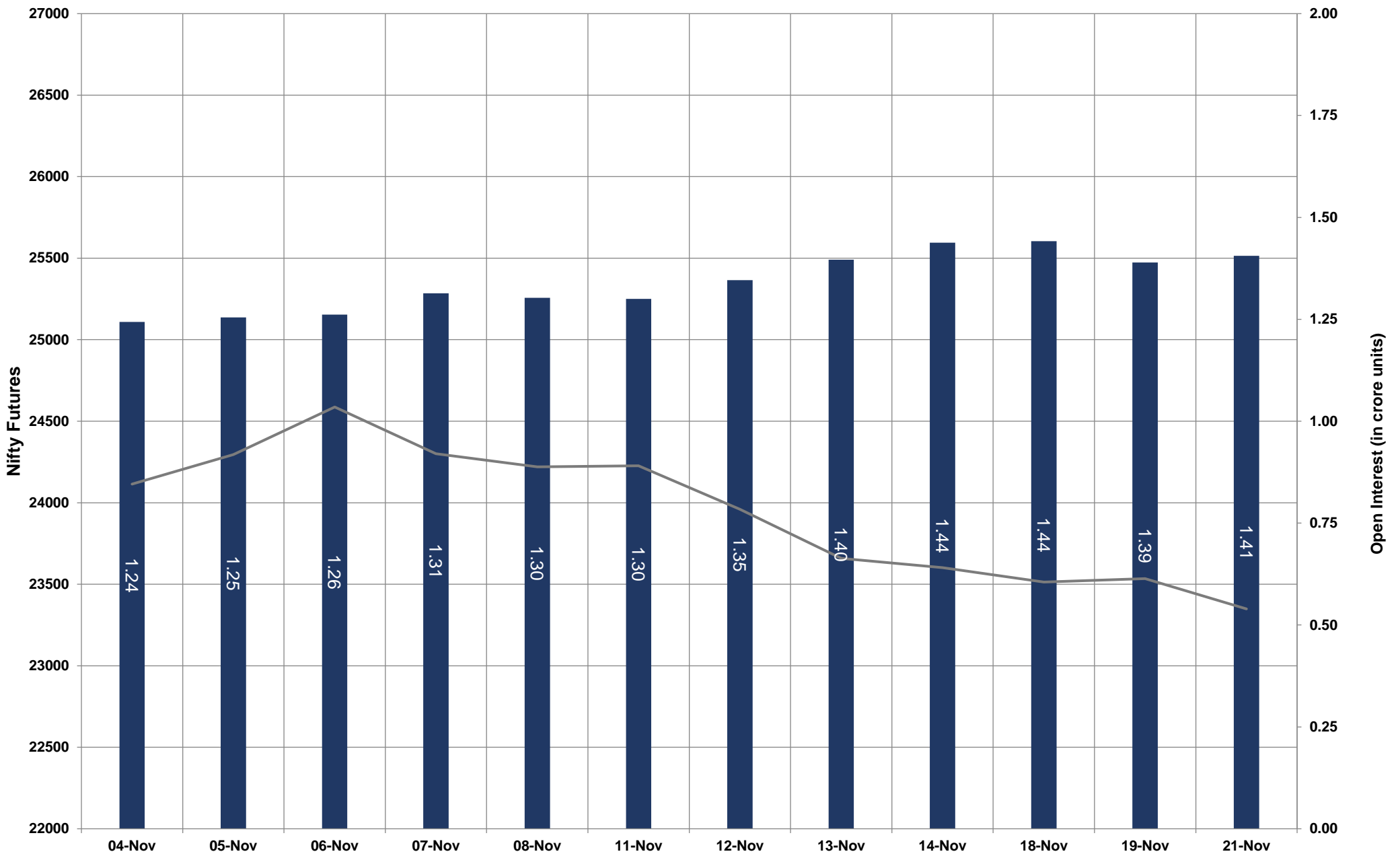


- Nifty Cash = **23349.90 (-0.72%)**
- Resistance levels = **23550** and **23700**
- Support levels = **23150** and **23000**

TECHNICAL VIEWS



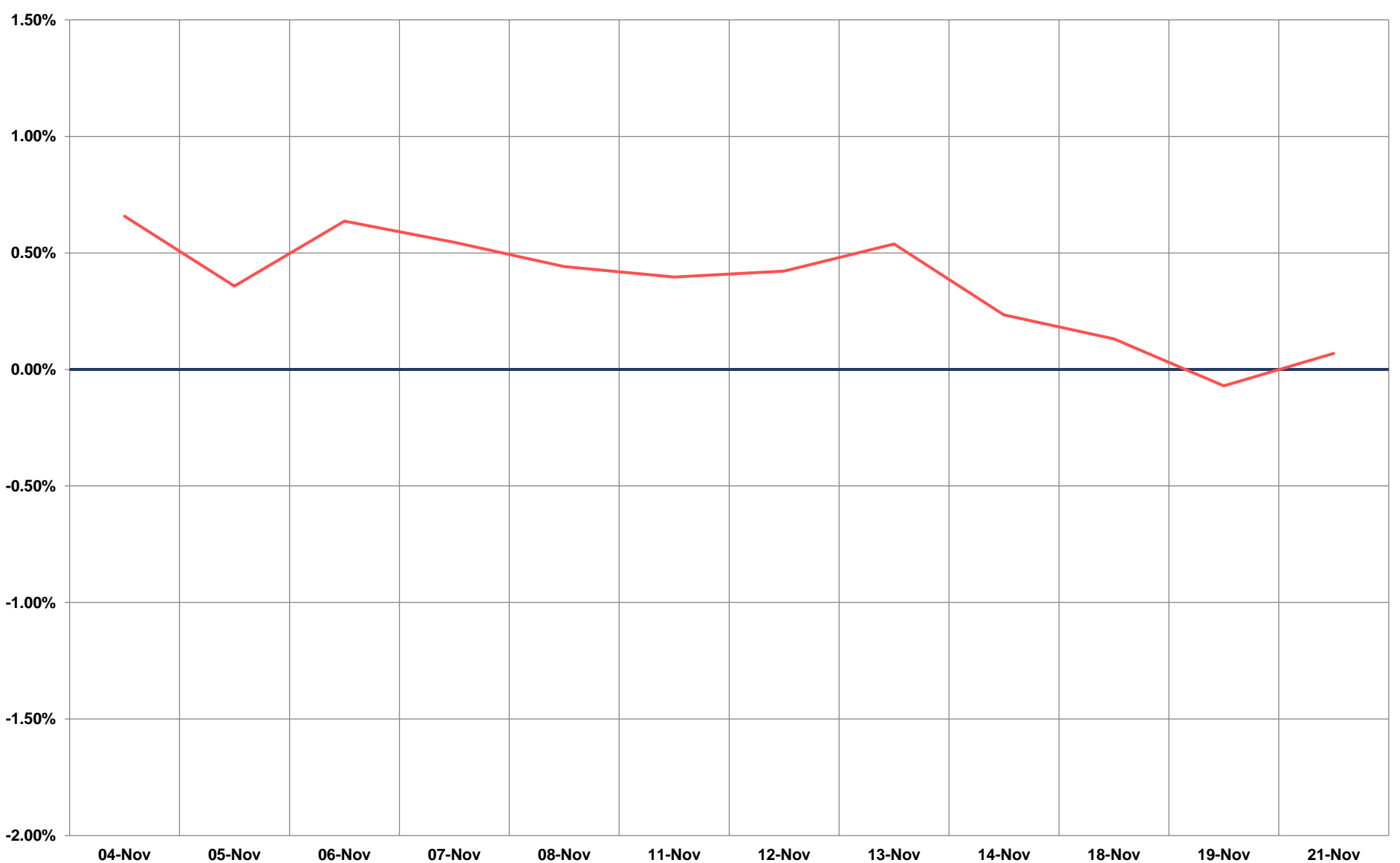
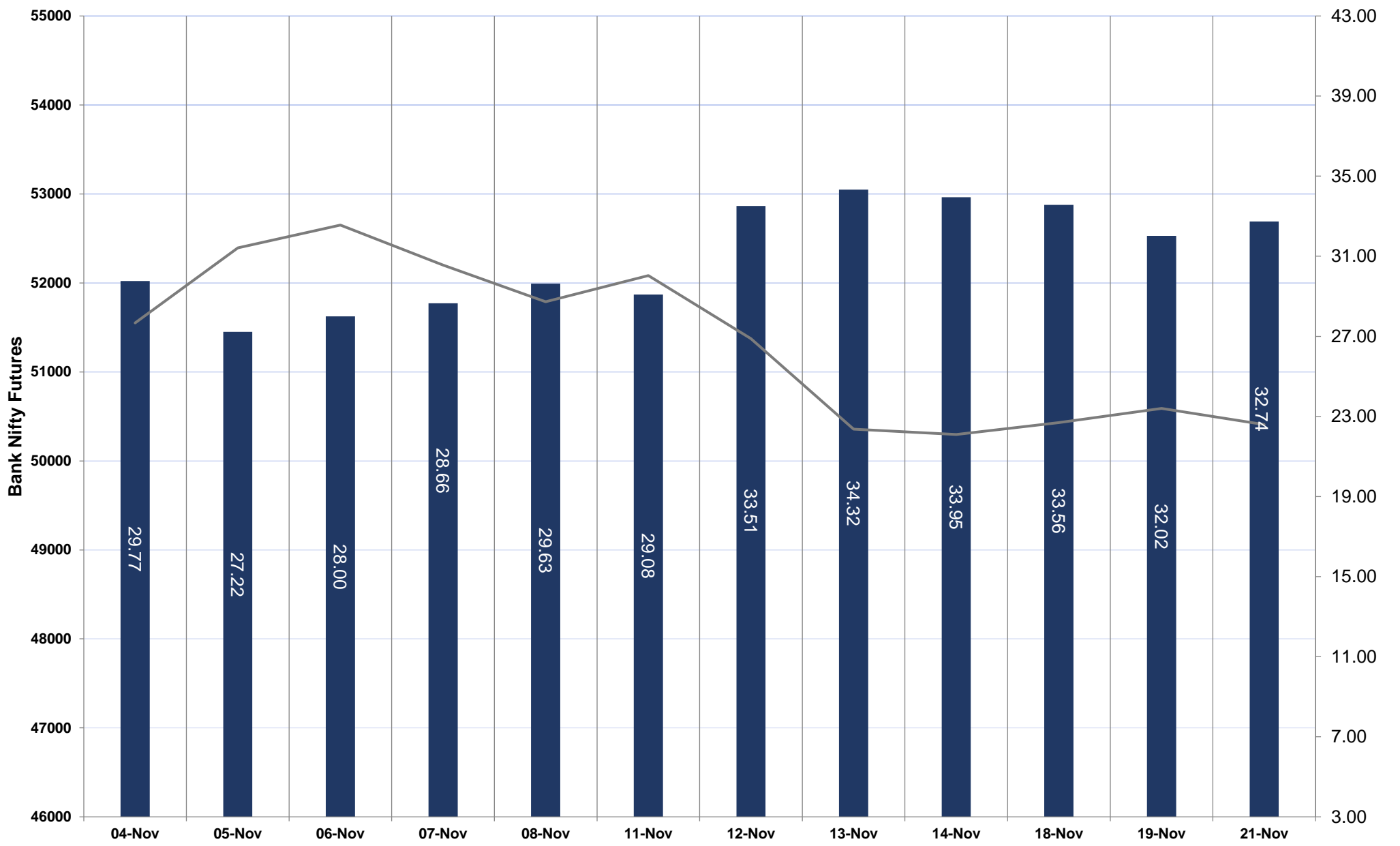
NIFTY FUTURES



TECHNICAL VIEWS



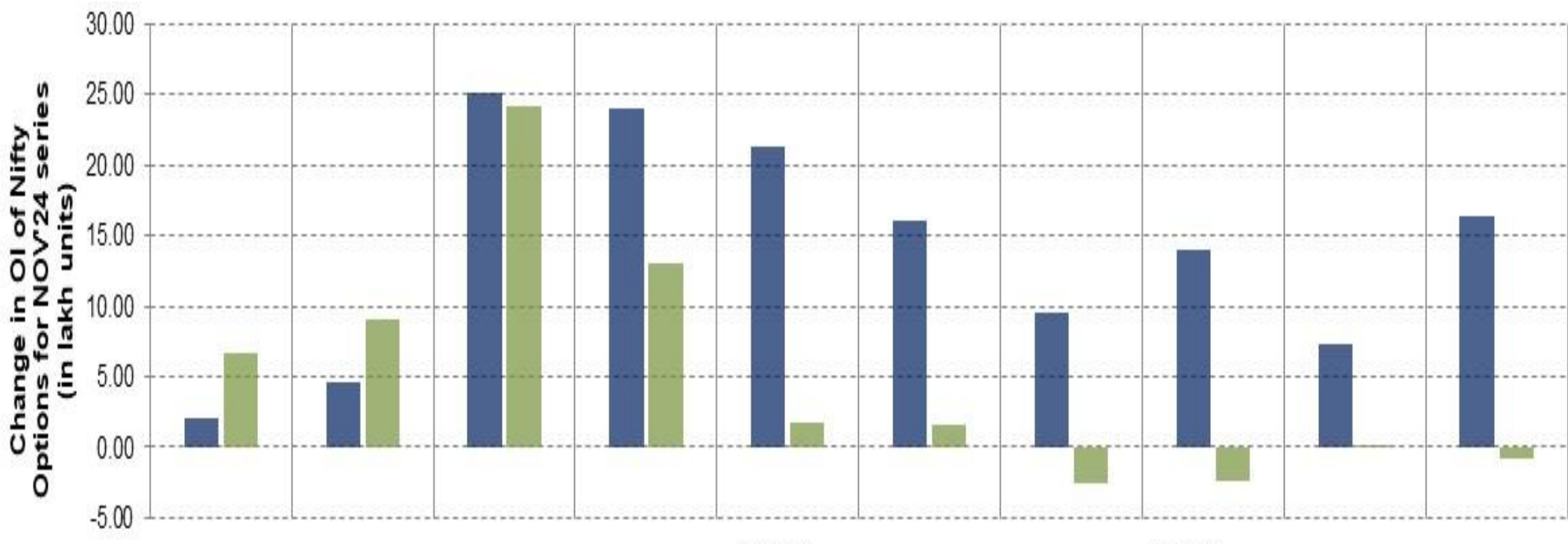
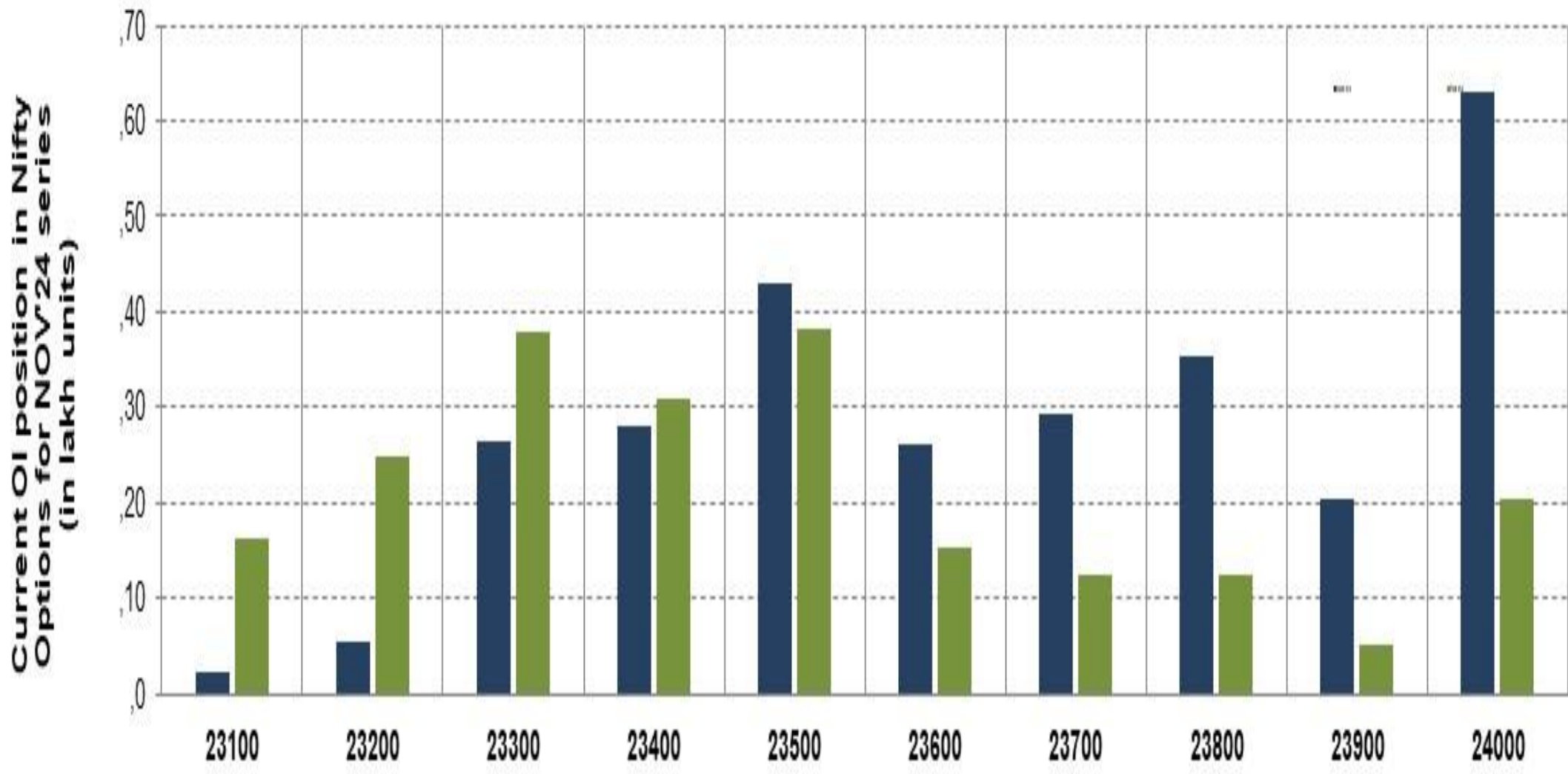
BANK NIFTY FUTURES



TECHNICAL VIEWS



NIFTY OPTIONS



- **Most Active Nifty Call** with an addition of 0.62 million in Open Interests is **Strike Price of 24000**
- **Most Active Nifty Put** with an addition of 0.36 millions in Open Interests is **Strike Price of 23700**
- **Maximum Open Interest an outstanding** was 4.66 millions for Calls at **Strike Price of 24000**
- **Maximum Open Interest an outstanding** was 3.65 millions for puts at **Strike Price of 23500**

Disclaimer



The Information provided by SMS or in newsletter or in any document has been prepared by Shah Investor's Home Ltd (SIHL). The Information provided by SMS or in newsletter does not constitute an offer or solicitation for the purchase or sale of any financial instrument or as an official confirmation of any transaction. The information contained herein is from publicly available data or other sources believed to be reliable, but we do not represent that it is accurate or complete and it should not be relied on as such. SIHL or any of its affiliates/ group companies shall not be in any way responsible for any loss or damage that may arise to any person from any error in the information contained in this report or SMS. This Information provided by SMS, reports or in newsletter is provided for assistance only and is not intended to be and must not alone be taken as the basis for an investment decision. The user assumes the entire risk of any use made of this information. Each recipient of this Information provided by SMS, report or in newsletter should make such investigation as it deems necessary to arrive at an independent evaluation of an investment in the securities of companies referred to in this information provided by SMS, report or in newsletter (including the merits and risks involved), and should consult his own advisors to determine the merits and risks of such investment. The investment discussed or views expressed may not be suitable for all investors. This information is strictly confidential and is being furnished to you solely for your information.

The information should not be reproduced or redistributed or passed on directly or indirectly in any form to any other person or published, copied, in whole or in part, for any purpose. The information provided by report or SMS is not directed or intended for distribution to, or use by, any person or entity who is a citizen or resident of or located in any locality, state, country or other jurisdiction, where such distribution, publication, availability or use would be contrary to law, regulation or which would subject SIHL and affiliates/ group companies to any registration or licensing requirements within such jurisdiction. The distribution of this Information provided by SMS or in newsletter in certain jurisdictions may be restricted by law, and persons in whose possession this Information provided by SMS or in newsletter comes, should inform themselves about and observe, any such restrictions. The information given or Information provided by SMS, report or in newsletter is as of the date of the issue date of report or the date on which SMS provided and there can be no assurance that future results or events will be consistent with this information. This information is subject to change without any prior notice. SIHL reserves the right to make modifications and alterations to this statement as may be required from time to time. However, SIHL is under no obligation to update or keep the information current.

Nevertheless, SIHL is committed to providing independent and transparent recommendation to its client and would be happy to provide any information in response to specific client queries. Neither SIHL nor any of its affiliates, group companies, directors, employees, agents or representatives shall be liable for any damages whether direct, indirect, special or consequential including lost revenue or lost profits that may arise from or in connection with the use of the information. Past performance is not necessarily a guide to future performance. The disclosures of interest statements incorporated in the Information provided by SMS, report or in newsletter are provided solely to enhance the transparency and should not be treated as endorsement of the views expressed in the report. The analyst for this report certifies that all of the views expressed in this report accurately reflect his or her personal views about the subject company or companies and its or their securities, and no part of his or her compensation was, is or will be, directly or indirectly related to specific recommendations or views expressed in this report.